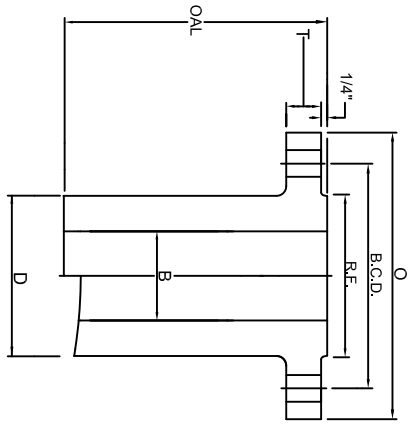
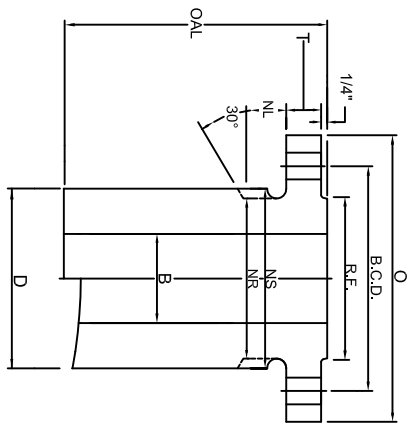


CLASS 600 NOZZLE

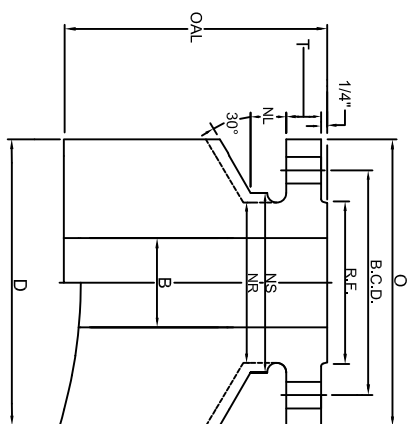
BARREL TYPES:
LWN, HB, CO



LONG WELD NECK "LWN"



HEAVY BARREL "HB"



COMPLETE BARREL "CO"

SIZE	FLANGE			BOLTING			BORE		BARREL			LENGTH		WEIGHTS							
	FLG O.D.	FLG THK	R.F. O.D.	No. OF HOLES	HOLE SIZE	B.C.D./B.C.D.	LWN&CO	HB	STOP/RELIEF	LWN	HB	CO	BASE	LWN	HB	CO					
NPS SIZE	O	T	R.F.				B	B	NS	NR	NL	D	D	D	OAL	BASE	PER 1"	BASE	PER 1"	BASE	PER 1"
1/2	3.75	0.56	1.38	4	0.62	2.62	0.50	0.55	1.75	1.50	0.75	1.50	1.75	3.75	9	5	0.4	7	0.6	24	3.1
3/4	4.62	0.62	1.69	4	0.75	3.25	0.75	0.74	2.19	1.88	0.88	1.88	2.19	4.62	9	8	0.7	11	0.9	36	4.6
1	4.88	0.69	2.00	4	0.75	3.50	1.00	0.96	2.44	2.12	0.88	2.12	2.44	4.88	9	9	0.8	12	1.1	39	5.1
1 1/4	5.25	0.81	2.50	4	0.75	3.88	1.25	1.28	2.81	2.50	0.88	2.50	2.81	5.25	9	13	1	15	1.4	44	5.8
1 1/2	6.12	0.88	2.88	4	0.88	4.50	1.50	1.50	3.25	2.75	1.00	2.75	3.25	6.12	9	16	1.2	21	1.9	59	7.8
2	6.50	1.00	3.62	8	0.75	5.00	2.00	1.94	3.94	3.31	0.88	3.31	3.94	6.50	9	20	1.5	29	2.6	67	8.5
2 1/2	7.50	1.12	4.12	8	0.88	5.88	2.50	2.32	4.62	3.94	1.00	3.94	4.62	7.50	9	27	2.1	39	3.6	85	11
3	8.25	1.25	5.00	8	0.88	6.62	3.00	2.90	5.38	4.62	1.00	4.62	5.38	8.25	9	36	2.7	50	4.6	104	13
3 1/2	9.00	1.38	5.50	8	1.00	7.25	3.50	3.36	5.81	5.25	1.12	5.25	5.81	9.00	9	45	3.4	57	5.0	116	15
4	10.75	1.50	6.19	8	1.00	8.50	4.00	3.83	7.06	6.00	1.13	6.00	7.06	10.75	12	77	4.5	113	7.8	238	22
5	13.00	1.75	7.31	8	1.12	10.50	5.00	4.81	8.88	7.50	1.25	7.50	8.88	13.00	12	123	7	180	12	336	32
6	14.00	1.88	8.50	12	1.12	11.50	6.00	5.76	9.88	8.75	1.25	8.75	9.88	14.00	12	152	9	207	14	373	36
8	16.50	2.19	10.62	12	1.25	13.75	8.00	7.62	11.94	10.75	1.38	10.75	11.94	16.50	12	207	11	277	19	478	46
10	20.00	2.50	12.75	16	1.38	17.00	10.00	9.56	15.00	13.50	1.50	13.50	15.00	20.00	12	324	18	433	30	683	67
12	22.00	2.62	15.00	20	1.38	19.25	12.00	11.38	17.25	15.75	1.50	15.75	17.25	22.00	12	393	23	533	37	779	76
14	23.75	2.75	16.25	20	1.50	20.75	14.00	14.00	18.56	17.00	1.62	17.00	18.56	23.75	16	471	21	631	33	1149	82
16	27.00	3.00	18.50	20	1.62	23.75	16.00	16.00	21.38	19.50	1.75	19.50	21.38	27.00	16	638	28	856	45	1471	105
18	29.25	3.25	21.00	20	1.75	25.75	18.00	18.00	23.19	21.50	1.88	21.50	23.19	29.25	16	731	31	941	48	1628	118
20	32.00	3.50	23.00	24	1.75	28.50	20.00	20.00	25.94	24.00	1.88	24.00	25.94	32.00	16	916	39	1180	61	1920	139
24	37.00	4.00	27.25	24	2.00	33.00	24.00	24.00	30.06	28.25	2.12	28.25	30.06	37.00	16	1210	49	1486	73	2376	176

MATERIAL: Tri-Lad nozzles are manufactured from forgings in full accordance with ASME Section II. Tri-Lad can supply a variety of material grades, most commonly SA105, SA350 LF2, Alloy, Stainless, and other grades or exotics as needed.

BORE: Bore sizes listed above are standard. Tri-Lad will supply any bore size to meet your requirements upon request.

LENGTH: Over all lengths listed are standard to use for hose weight calculations. Tri-Lad will manufacture the length of nozzle you require to suit your needs upon request.

TOLERANCING: Tri-Lad manufactures nozzles to ANSI B16.5 tolerances unless otherwise specified. Any standard or custom facing will be supplied upon request.

NUT STOP/RELIEF: Barrels on all Tri-Lad nozzles except regular long weld necks are manufactured with "Nut Stop"(NS) diameters unless the "Nut Relief"(NR) diameter is requested.

NOZZLE CONNECTIONS: Tri-Lad nozzle connections are supplied standard as square cut. Custom contouring or insert lip connections to fit any shell, head, or cone are available upon request.