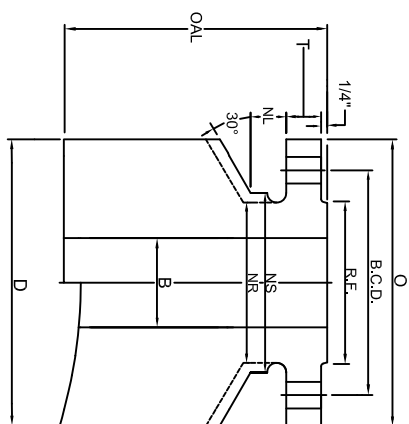
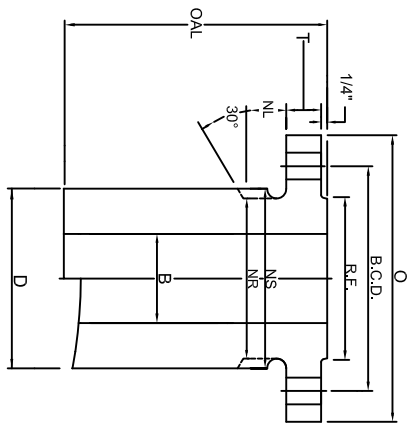
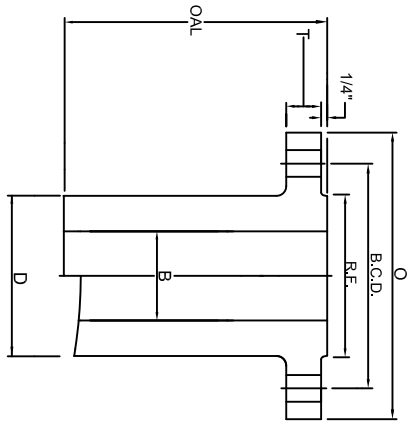


# CLASS 1500 NOZZLE



BARREL TYPES:  
LWN, HB, CO

LONG WELD NECK "LWN"

HEAVY BARREL "HB"

COMPLETE BARREL "CO"

SIZE	FLANGE			BOLTING			BORE			BARREL			LENGTH		WEIGHTS		CO			
	NOM. SIZE	FLG O.D.	FLG THK	R.F. O.D.	No. OF HOLES	HOLE SIZE	B.C.DIA.	LWN&CO	HB	STOP/RELIEF	LWN	HB	CO	BASE OAL	LWN	HB	BASE PER 1"	HB	CO	
	O	I	R.F.				B.C.D.	B	B	NS	NR	NL	D	D	D	D	BASE	PER 1"	BASE PER 1"	BASE PER 1"
1/2	4.75	0.88	1.38	4	0.88	3.25	0.50	0.55	2.00	1.56	1.00	1.56	2.00	4.75	8	0.5	10	0.8	37	5
3/4	5.12	1.00	1.69	4	0.88	3.50	0.75	0.74	2.25	1.81	1.00	1.81	2.25	5.12	10	0.6	13	1	42	5.7
1	5.88	1.12	2.00	4	1.00	4.00	1.00	0.96	2.56	2.12	1.12	2.12	2.56	5.88	13	0.8	17	1.3	54	7.5
1 1/4	6.25	1.12	2.50	4	1.00	4.38	1.25	1.28	2.94	2.50	1.12	2.50	2.94	6.25	17	1	20	1.6	61	8.3
1 1/2	7.00	1.25	2.88	4	1.12	4.88	1.50	1.50	3.25	2.75	1.25	2.75	3.25	7.00	21	1.2	26	1.9	77	10
2	8.50	1.50	3.62	8	1.00	6.50	2.00	1.94	5.06	4.12	1.12	4.12	5.06	8.50	42	2.9	56	4.9	115	15
2 1/2	9.62	1.62	4.12	8	1.12	7.50	2.50	2.32	5.88	4.88	1.25	4.88	5.88	9.62	56	3.9	75	5.5	144	19
3	10.50	1.88	5.00	8	1.25	8.00	3.00	2.90	6.19	5.25	1.38	5.25	6.19	10.50	67	4.1	84	6.7	161	23
4	12.25	2.12	6.19	8	1.38	9.50	4.00	3.83	7.50	6.38	1.50	6.38	7.50	12.25	110	5.5	110	9.3	302	30
5	14.75	2.88	7.31	8	1.62	11.50	5.00	4.81	9.12	7.75	1.75	7.75	9.12	14.75	181	7.8	147	13	414	43
6	15.50	3.25	8.50	12	1.50	12.50	6.00	5.76	10.31	9.00	1.62	9.00	10.31	15.50	215	10	272	16	445	46
8	19.00	3.62	10.62	12	1.75	15.50	8.00	7.62	12.94	11.50	1.88	11.50	12.94	19.00	337	15	417	24	629	67
10	23.00	4.25	12.75	12	2.00	19.00	10.00	9.56	16.06	14.50	2.12	14.50	16.06	23.00	546	25	546	37	888	97
12	26.50	4.88	15.00	16	2.12	22.50	12.00	11.38	19.38	17.75	2.25	17.75	19.38	26.50	946	38	651	55	1148	127
14	29.50	5.25	16.25	16	2.38	25.00	14.00	14.00	21.50	19.50	2.50	19.50	21.50	29.50	1116	41	808	59	1308	150
16	32.50	5.75	18.50	16	2.62	27.75	16.00	16.00	23.88	21.75	2.75	21.75	23.88	32.50	1371	48	941	70	1588	178
18	36.00	6.38	21.00	16	2.88	30.50	18.00	18.00	26.25	23.50	3.00	23.50	26.25	36.00	1674	51	1099	81	1959	216
20	38.75	7.00	23.00	16	3.12	32.75	20.00	20.00	28.12	25.25	3.25	25.25	28.12	38.75	1943	53	1241	87	2269	245
24	46.00	8.00	27.25	16	3.62	39.00	24.00	24.00	33.62	30.00	3.75	30.00	33.62	46.00	2936	72	1534	123	2819	343

MATERIAL: Tri-Lad nozzles are manufactured from forgings in full accordance with ASME Section II. Tri-Lad can supply a variety of material grades, mostly SA105, SA350 LF2, Alloy, Stainless, and other grades or exotics as needed.

BORE: Bore sizes listed above are standard. Tri-Lad will supply any bore size to meet your requirements upon request.

LENGTH: Over all lengths listed are standard to use for base weight calculations. Tri-Lad will manufacture the length of nozzle you require to suit your needs upon request.

TOLERANCING: Tri-Lad manufactures nozzles to ANSI B16.5 tolerances unless otherwise specified. Any standard or custom facing will be supplied upon request.

NUT STOP/RELIEF: Barrels on all Tri-Lad nozzles except regular long weld necks are manufactured with "Nut Stop"(NS) diameters unless the "Nut Relief"(NR) diameter is requested.

NOZZLE CONNECTIONS: Tri-Lad nozzle connections are supplied standard as square cut. Custom contouring or insert lip connections to fit any shell, head, or cone are available upon request.