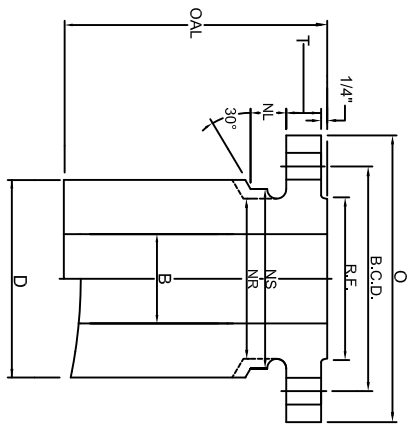
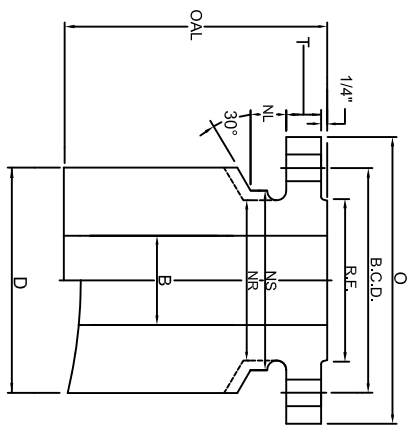


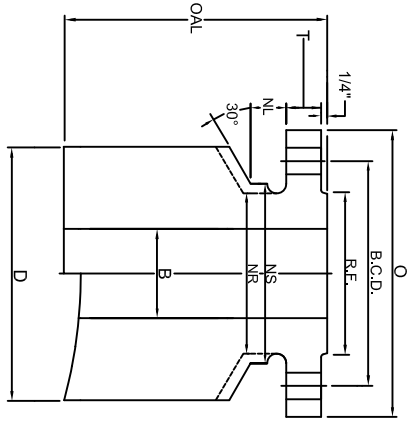
# CLASS 600 NOZZLE



T1



T2



T3

## TRANSITIONAL CONNECTIONS: T1, T2, & T3

SIZE	FLANGE			BOLTING			BORE			NUT STOP/RELIEF			BARREL			LENGTH			WEIGHTS			
	NOM. NPS SIZE	FLG O.D.	FLG THK	R.F. O.D.	R.F.	No. OF HOLES	HOLE SIZE	B.C.D.	B.C.D.	B	NS	NR	NL	T1 D	T2 D	T3 D	BASE OAL	T1 BASE	T1 PER 1"	T2 BASE	T2 PER 1"	T3 BASE
1	4.88	0.69	2.00	4	0.75	3.50	0.96	2.44	2.12	0.88	3.25	4.00	4.63	12	26	2.2	38	3.4	50	69	50	6.2
1 1/2	6.12	0.88	2.88	4	0.88	4.50	1.50	3.25	2.75	1.00	4.00	4.62	5.50	12	39	3.1	50	4.3	69	81	69	6.2
2	6.50	1.00	3.62	8	0.75	5.00	1.94	3.94	3.31	0.88	4.62	5.50	6.00	12	50	3.9	69	5.9	81	98	81	7.2
2 1/2	7.50	1.12	4.12	8	0.88	5.88	2.32	4.62	3.94	1.00	5.75	6.38	7.00	12	83	6.2	98	7.9	105	98	105	9.7
3	8.25	1.25	5.00	8	0.88	6.62	2.90	5.38	4.62	1.00	6.38	7.00	7.75	12	88	7.2	105	9	127	105	127	11.5
3 1/2	9.00	1.38	5.50	8	1.00	7.25	3.36	5.81	5.25	1.12	7.00	7.75	8.25	12	103	8.4	124	10.9	140	124	140	12.6
4	10.75	1.50	6.19	8	1.00	8.50	3.83	7.06	6.00	1.12	7.75	8.88	9.88	12	132	10.1	169	14.2	169	14.2	205	18.4
5	13.00	1.75	7.31	8	1.12	10.50	4.81	8.88	7.50	1.25	9.88	11.00	12.12	12	216	16.5	259	21.8	300	25	305	27.5
6	14.00	1.88	8.50	12	1.12	11.50	5.76	9.88	8.75	1.25	11.00	12.12	13.25	12	235	20	300	25	300	25	350	32
8	16.50	2.19	10.62	12	1.25	13.75	7.62	11.94	10.75	1.38	13.25	15.12	16.00	12	335	26	427	38	427	38	478	44
10	20.00	2.50	12.75	16	1.38	17.00	9.56	15.00	13.50	1.50	16.25	17.38	18.25	16	650	38	747	47	747	47	824	54
12	22.00	2.62	15.00	20	1.38	19.25	11.38	17.25	15.75	1.50	18.25	19.38	20.12	16	771	45	877	55	877	55	949	61
14	23.75	2.75	16.25	20	1.50	20.75	14.00	18.56	17.00	1.62	19.38	20.12	22.25	16	708	40	781	47	781	47	994	67
16	27.00	3.00	18.50	20	1.62	23.75	16.00	21.38	19.50	1.75	23.25	24.12	25.00	16	1055	63	1151	73	1151	73	1248	82
18	29.25	3.25	21.00	20	1.75	25.75	18.00	23.19	21.50	1.88	24.12	26.25	27.75	16	1044	57	1283	81	1283	81	1456	99
20	32.00	3.50	23.00	24	1.75	28.50	20.00	25.94	24.00	1.88	27.75	29.25	30.75	16	1398	82	1582	101	1582	101	1767	121
24	37.00	4.00	27.25	24	2.00	33.00	24.00	30.06	28.25	2.12	30.75	32.00	33.62	16	1574	82	1736	100	1736	100	1946	123

**MATERIAL:** Tri-Lad nozzles are manufactured from forgings in full accordance with ASME Section II. Tri-Lad can supply a variety of material grades, mostly SA105, SA350 LF2, Alloy, Stainless, and other grades or exotics as needed.

**BORE:** Bore sizes listed above are standard. Tri-Lad will supply any bore size to meet your requirements upon request.

**LENGTH:** Over all lengths listed are standard to use for base weight calculations. Tri-Lad will manufacture the length of nozzle you require to suit your needs upon request.

**TOLERANCING:** Tri-Lad manufactures nozzles to ANSI B16.5 tolerances unless otherwise specified. Any standard or custom facing will be supplied upon request.

**NUT STOP/RELIEF:** Barrels on all Tri-Lad nozzles except regular long weld necks are manufactured with "Nut Stop"(NS) diameters unless the "Nut Relief"(NR) diameter is requested.

**NOZZLE CONNECTIONS:** Tri-Lad nozzle connections are supplied standard as square cut. Custom contouring or insert lip connections to fit any shell, head, or cone are available upon request.