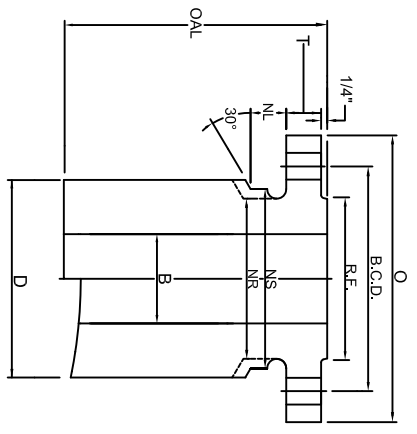
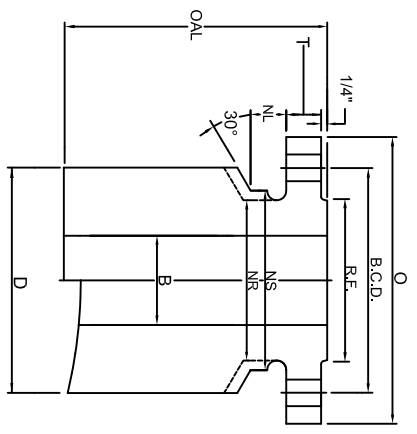


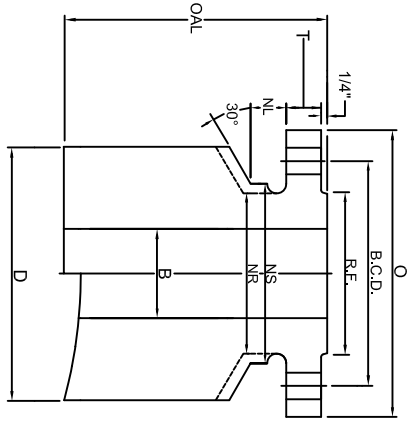
# CLASS 2500 NOZZLE



T 1



T 2



T 3

## TRANSITIONAL CONNECTIONS: T1, T2, & T3

SIZE NPS SIZE	FLANGE			BOLTING			BARREL					LENGTH			WEIGHTS					
	FLG O.D.	FLG THK	R.F. O.D.	NO. OF HOLES	HOLE SIZE	B.C. DIA.	BORE	NUT STOP/RELIEF	T1	T2	T3	BASE OAL	T1	T2	T3	BASE PER 1"	T1	T2	T3	
1	6.25	1.38	2.00	4	1.00	4.25	0.96	2.81	2.25	1.12	4.00	4.62	5.50	12	43	3.4	54	4.6	71	6.5
1 1/2	8.00	1.75	2.88	4	1.25	5.75	1.50	3.94	3.12	1.38	5.50	6.00	7.00	12	79	6.2	89	7.5	112	10.4
2	9.25	2.00	3.62	8	1.12	6.75	1.94	5.12	3.75	1.25	6.00	7.00	8.00	12	99	7.2	123	10	149	13.4
2 1/2	10.50	2.25	4.12	8	1.25	7.75	2.32	5.94	4.50	1.38	7.00	7.75	8.88	12	135	10	153	12	184	16
3	12.00	2.62	5.00	8	1.38	9.00	2.90	7.00	5.25	1.50	8.25	9.88	11.00	12	186	13	232	20	267	25
4	14.00	3.00	6.19	8	1.62	10.75	3.83	8.38	6.50	1.75	9.88	11.00	12.12	12	259	18	293	24	328	29
5	16.50	3.62	7.31	8	1.88	12.75	4.81	10.00	8.00	2.00	11.00	13.50	15.25	12	347	22	422	35	477	47
6	19.00	4.25	8.50	8	2.12	14.50	5.76	11.38	9.25	2.25	13.50	15.12	17.38	12	499	33	545	44	609	60
8	21.75	5.00	10.62	12	2.12	17.25	7.62	14.12	12.00	2.25	15.12	18.25	20.12	12	647	38	735	61	785	77
10	26.50	6.50	12.75	12	2.62	21.25	9.56	17.38	14.75	2.75	20.12	22.25	24.12	16	1342	70	1451	90	1545	109
12	30.00	7.25	15.00	12	2.88	24.38	11.38	20.12	17.38	3.00	22.25	25.00	27.75	16	1713	81	1844	110	1966	143

**MATERIAL:** Tri-Lad nozzles are manufactured from forgings in full accordance with ASME Section II. Tri-Lad can supply a variety of material grades, mostly SA105, SA350 LF2, Alloy, Stainless, and other grades or exotics as needed.

**BORE:** Bore sizes listed above are standard. Tri-Lad will supply any bore size to meet your requirements upon request.

**LENGTH:** Over all lengths listed are standard to use for base weight calculations. Tri-Lad will manufacture the length of nozzle you require to suit your needs upon request.

**TOLERANCING:** Tri-Lad manufactures nozzles to ANSI B16.5 tolerances unless otherwise specified. Any standard or custom facing will be supplied upon request.

**NUT STOP/RELIEF:** Barrels on all Tri-Lad nozzles except regular long weld necks are manufactured with "Nut Stop"(NS) diameters unless the "Nut Relief"(NR) diameter is requested.

**NOZZLE CONNECTIONS:** Tri-Lad nozzle connections are supplied standard as square cut. Custom contouring or insert lip connections to fit any shell, head, or cone are available upon request.