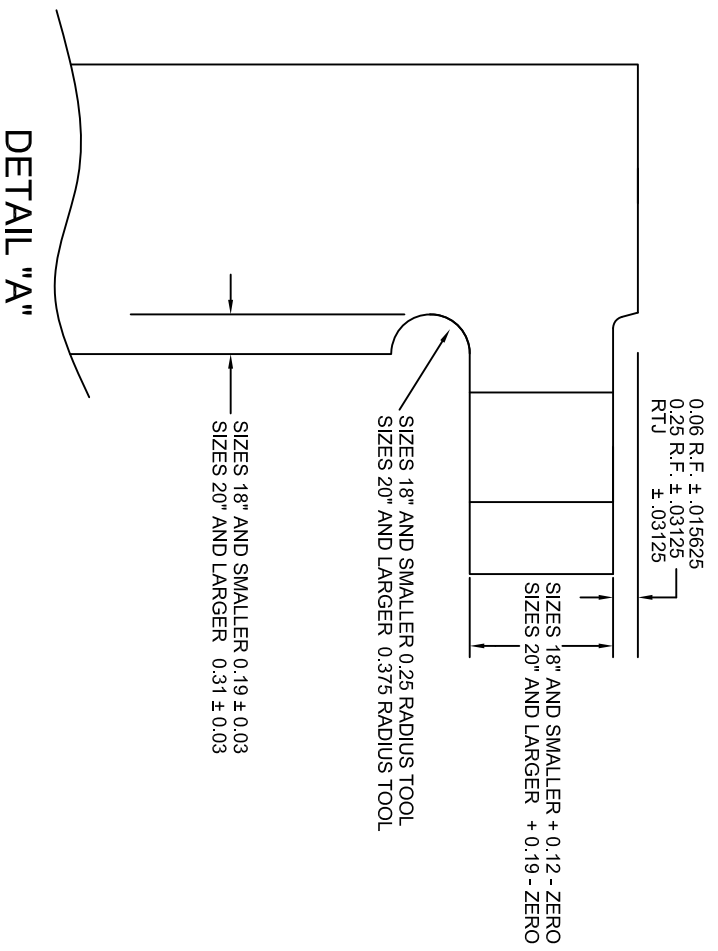
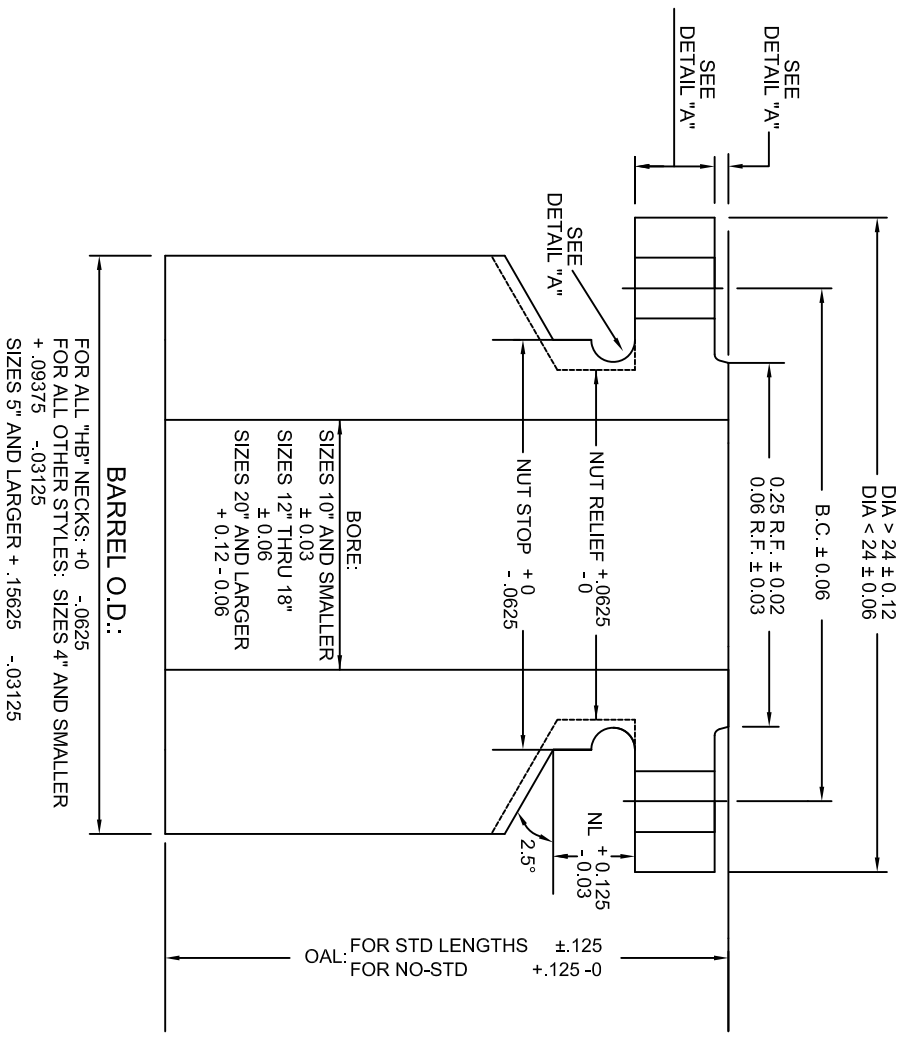




TOLERANCES

PRESSURE VESSEL CONNECTIONS: LWN, HB & CO TRANSITIONAL CONNECTIONS: T1, T2, T3



Note: Undercut dimensions and tolerances comply with ASME Section VIII Division 1, Fig 2-4

- General Notes:
- (1) All dimensions are in inches.
 - (2) FVC connections are manufactured in accordance with the tolerances set forth by ANSI B16.5
 - (3) Tolerances may be modified to meet customer requirements when specified.