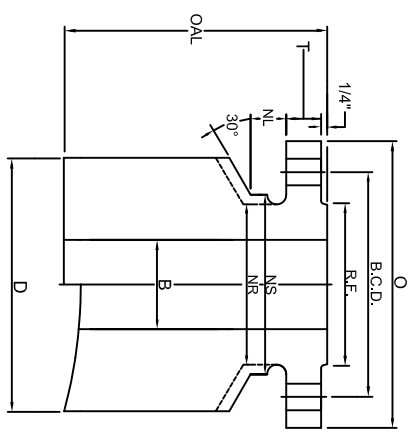
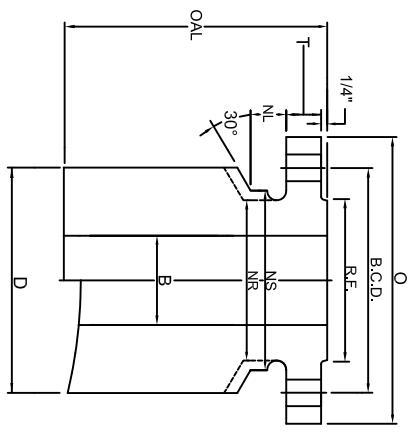
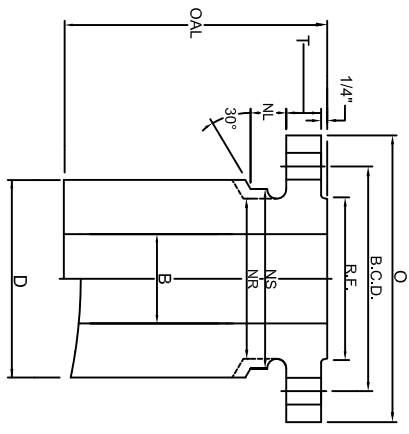


CLASS 400 NOZZLE



TRANSITIONAL CONNECTIONS:
T1, T2, & T3

SIZE	FLANGE			BOLTING			BARREL						LENGTH		WEIGHTS					
	NOM. NPS SIZE	FLG O.D.	FLG THK	R.F. O.D.	No. OF HOLES	HOLE SIZE	B.C.DIA.	BORE B	NUT STOP/RELIEF NS	NR	NL	T1 D	T2 D	T3 D	BASE O.A.L.	T1 BASE	T1 PER 1"	T2 BASE	T2 PER 1"	T3 BASE
1	4.88	0.69	2.00	4	0.75	3.50	0.96	2.44	2.12	0.88	2.75	3.25	4.00	12	20	1.5	27	2.2	39	3.4
1 1/2	6.12	0.88	2.88	4	0.88	4.50	1.50	3.25	2.75	1.00	4.00	4.62	5.50	12	39	3.1	51	4.3	69	6.2
2	6.50	1.00	3.62	8	0.75	5.00	1.94	3.94	3.31	0.88	4.62	5.50	6.60	12	49	3.9	69	5.9	95	8.9
2 1/2	7.50	1.13	4.12	8	0.88	5.88	2.32	4.62	3.94	1.00	5.75	6.00	6.38	12	73	6.2	81	6.8	90	7.8
3	8.25	1.25	5.00	8	0.88	6.62	2.90	5.38	4.62	1.00	6.00	6.38	7.00	12	79	6.1	89	7.2	106	9
3 1/2	9.00	1.38	5.50	8	1.00	7.25	3.36	5.81	5.25	1.12	7.00	7.75	8.25	12	106	8.4	128	11	145	13
4	10.00	1.38	6.19	8	1.00	7.88	3.83	6.44	5.75	1.12	7.00	7.75	8.88	12	104	7.6	126	10	165	14
5	11.00	1.50	7.31	8	1.00	9.25	4.81	7.81	7.00	1.12	8.25	8.88	9.88	12	135	10	157	12	195	17
6	12.50	1.62	8.50	12	1.00	10.62	5.76	9.19	8.12	1.12	9.88	10.38	11.00	12	188	14	208	17	235	20
8	15.00	1.88	10.62	12	1.12	13.00	7.62	11.38	10.25	1.25	12.12	13.50	14.25	12	259	20	327	28	366	32
10	17.50	2.12	12.75	16	1.25	15.25	9.56	13.44	12.62	1.38	14.25	15.12	16.25	16	431	25	502	31	594	38
12	20.50	2.25	15.00	16	1.38	17.75	11.38	15.75	14.75	1.50	16.25	17.38	18.25	16	539	30	641	38	724	45
14	23.00	2.38	16.25	20	1.38	20.25	14.00	18.25	16.75	1.50	19.38	20.12	22.25	16	690	40	768	47	974	67
16	25.50	2.50	18.50	20	1.50	22.50	16.00	20.31	19.00	1.62	22.25	23.25	24.12	16	887	53	980	63	1078	73
18	28.00	2.62	21.00	24	1.50	24.75	18.00	22.56	21.00	1.62	24.12	25.12	26.75	16	982	57	1102	68	1284	87
20	30.50	2.75	23.00	24	1.62	27.00	20.00	24.63	23.12	1.75	26.75	27.75	29.25	16	1176	70	1283	82	1476	101
24	36.00	3.00	27.25	24	1.88	32.00	24.00	29.25	27.62	2.00	30.75	32.00	33.62	16	1437	82	1614	100	1844	123

MATERIAL: Tri-Lad nozzles are manufactured from forgings in full accordance with ASME Section II. Tri-Lad can supply a variety of material grades, most commonly SA105, SA350 LF2, Alloy, Stainless, and other grades or exotics as needed.

BORE: Bore sizes listed above are standard. Tri-Lad will supply any bore size to meet your requirements upon request.

LENGTH: Over all lengths listed are standard to use for base weight calculations. Tri-Lad will manufacture the length of nozzle you require to suit your needs upon request.

TOLERANCING: Tri-Lad manufactures nozzles to ANSI B16.5 tolerances unless otherwise specified. Any standard or custom facing will be supplied upon request.

NUT STOP/RELIEF: Barrels on all Tri-Lad nozzles except regular long weld necks are manufactured with "Nut Stop"(NS) diameters unless the "Nut Relief"(NR) diameter is requested.

NOZZLE CONNECTIONS: Tri-Lad nozzle connections are supplied standard as square cut. Custom contouring or insert lip connections to fit any shell, head, or cone are available upon request.