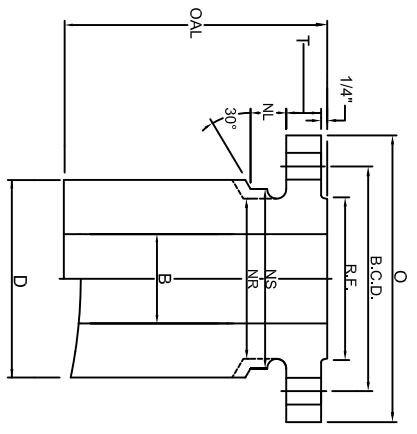
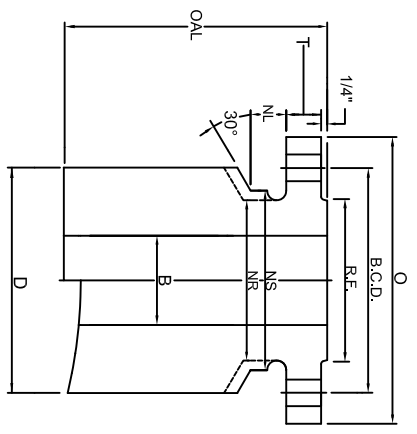


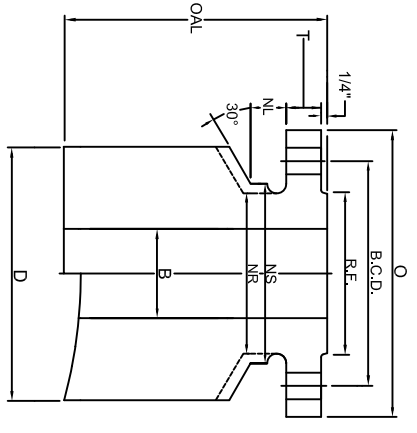
CLASS 1500 NOZZLE



T 1



T 2



T 3

TRANSITIONAL CONNECTIONS: T1, T2, & T3

SIZE	FLANGE			BOLTING			BARREL				LENGTH		WEIGHTS							
	FLG O.D.	FLG THK	R.F. O.D.	No. OF HOLES	HOLE SIZE	B.C.DIA.	BORE B	NUT STOP/RELIEF NS	NR	NL	T1 D	T2 D	T3 D	BASE OAL	T1 BASE	T1 PER 1"	T2 BASE	T2 PER 1"	T3 BASE	T3 PER 1"
1	5.88	1.12	2.00	4	1.00	4.00	0.96	2.56	2.12	1.12	3.25	4.00	4.62	12	29	2.2	41	3.4	51	4.6
1 1/2	7.00	1.25	2.88	4	1.12	4.88	1.50	3.25	2.75	1.25	4.62	5.50	6.00	12	54	4.3	71	6.2	82	7.5
2	8.50	1.50	3.62	8	1.00	6.50	1.94	5.06	4.12	1.12	5.50	6.00	7.00	12	80	5.9	92	7.2	117	10.1
2 1/2	9.62	1.62	4.12	8	1.12	7.50	2.32	5.88	4.88	1.25	6.38	7.00	8.25	12	107	8	123	10	158	14
3	10.50	1.88	5.00	8	1.25	8.00	2.90	6.19	5.25	1.38	7.00	7.75	8.88	12	124	9	144	12	177	16
4	12.25	2.12	6.19	8	1.38	9.50	3.83	7.50	6.38	1.50	8.88	9.88	11.00	12	187	14	218	18	257	24
5	14.75	2.88	7.31	8	1.62	11.50	4.81	9.12	7.75	1.75	10.38	12.12	13.50	12	271	19	328	28	376	35
6	15.50	3.25	8.50	12	1.50	12.50	5.76	10.31	9.00	1.62	12.12	13.50	14.25	12	332	25	380	33	408	38
8	19.00	3.62	10.62	12	1.75	15.50	7.62	12.94	11.50	1.88	15.12	16.25	17.38	12	498	38	541	46	585	54
10	23.00	4.25	12.75	12	2.00	19.00	9.56	16.06	14.50	2.12	17.38	20.12	22.25	16	889	47	1088	70	1243	90
12	26.50	4.88	15.00	16	2.12	22.50	11.38	19.38	17.75	2.25	22.25	23.25	24.12	16	1348	81	1426	92	1495	101
14	29.50	5.25	16.25	16	2.38	25.00	14.00	21.50	19.50	2.50	23.25	25.00	27.75	16	1443	77	1579	95	1794	128
16	32.50	5.75	18.50	16	2.62	27.75	16.00	23.88	21.75	2.75	26.25	29.25	30.75	16	1771	96	1999	133	2111	153
18	36.00	6.38	21.00	16	2.88	30.50	18.00	26.25	23.50	3.00	27.75	30.75	33.62	16	2070	99	2285	138	2481	180
20	38.75	7.00	23.00	16	3.12	32.75	20.00	28.12	25.25	3.25	30.75	33.00	36.00	16	2417	121	2558	153	2727	200
24	46.00	8.00	27.25	16	3.62	39.00	24.00	33.62	30.00	3.75	36.00	37.50	40.50	16	3470	160	3545	185	3675	237

MATERIAL: Tri-Lad nozzles are manufactured from forgings in full accordance with ASME Section II. Tri-Lad can supply a variety of material grades, mostly SA105, SA350 LF2, Alloy, Stainless, and other grades or exotics as needed.

BORE: Bore sizes listed above are standard. Tri-Lad will supply any bore size to meet your requirements upon request.

LENGTH: Over all lengths listed are standard to use for base weight calculations. Tri-Lad will manufacture the length of nozzle you require to suit your needs upon request.

TOLERANCING: Tri-Lad manufactures nozzles to ANSI B16.5 tolerances unless otherwise specified. Any standard or custom facing will be supplied upon request.

NUT STOP/RELIEF: Barrels on all Tri-Lad nozzles except regular long weld necks are manufactured with "Nut Stop"(NS) diameters unless the "Nut Relief"(NR) diameter is requested.

NOZZLE CONNECTIONS: Tri-Lad nozzle connections are supplied standard as square cut. Custom contouring or insert lip connections to fit any shell, head, or cone are available upon request.